



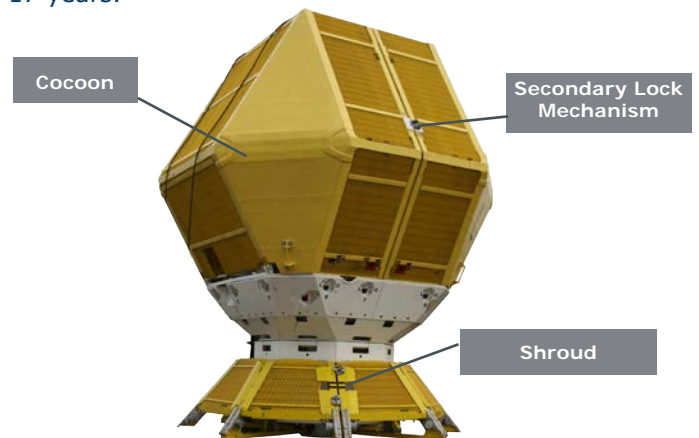
**Cocoon & Shroud<sup>®</sup> - A subsea solution**

The Pipex px<sup>®</sup> Cocoon & Shroud<sup>®</sup> is an innovative, “one-of-a-kind” structure designed, developed & built in-house to protect oil field subsea wellhead & production systems from the harsh marine environment & dropped objects during drilling or fishing trawler net incidents.

The structure is manufactured from premium grade, lightweight & corrosion resistant Fibre Reinforced Polymer (FRP) composite materials, requiring reduced cathodic protection; making it highly cost effective when compared to fully over trawlable steel structures.

The upper Cocoon part of the system is designed as a two piece structural cover with a smooth external surface ensuring fishing gear is easily deflected. The Shroud forms the base of the structure, penetrating the seabed. The system is placed over the subsea wellhead providing complete protection.

The subsea protection system can be deployed from a drill rig or construction vessel. It is a proven design with approximately 27 installed in the North Sea over the past 17 years.



**Advantages of Cocoon & Shroud<sup>®</sup>**



Corrosion resistant



Lightweight



Fast to install



Low maintenance

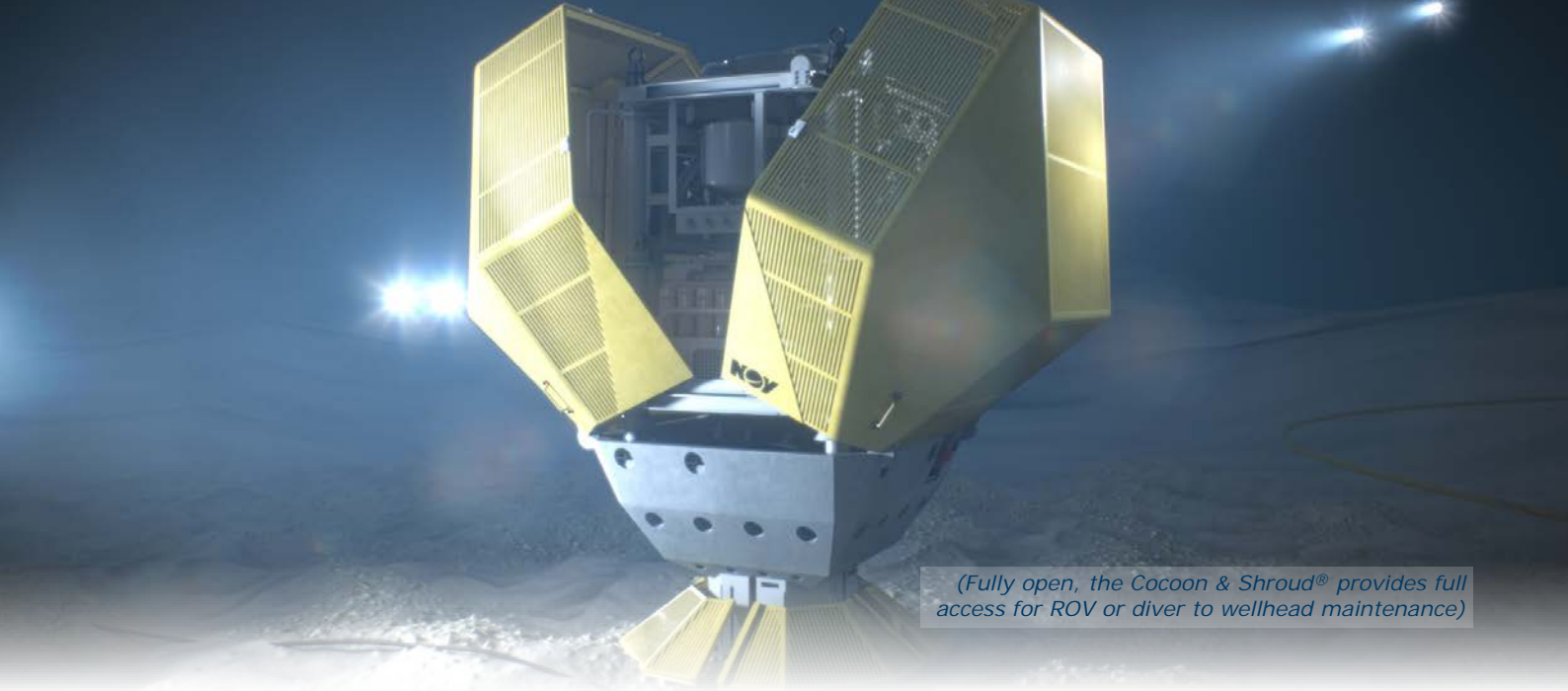


Pre-fabricated off-site



Strong & durable





(Fully open, the Cocoon & Shroud® provides full access for ROV or diver to wellhead maintenance)

Features a unique protection cover design



Secondary Lock Mechanism (SLM)



Smooth external surface to deflect trawler nets

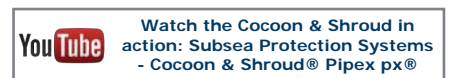


### COCOON & SHROUD® FEATURES:

- Developed & tested in-house to withstand impacts or snag loads from fishing gear warps, doors & clump weights
- The design life is in excess of 25 years, which is proven by Pipex px® unique FRP subsea aging data
- Secondary Lock Mechanism (SLM) provides additional integrity against incursions by fishing nets
- Fully open, the Cocoon & Shroud® provides full access for ROV or diver wellhead maintenance
- Low weight FRP structure & innovative locking pin enables simple & safe ROV or diver intervention techniques (each Cocoon cover weighs 2.5 tonnes in air & 1.25 tonnes in water)
- Highly cost effective when compared to “fully-overtrawlable” structures
- 5.5m high x 6.2m wide, the Cocoon & Shroud® can be manufactured for any flowbase type & size
- Manufactured from premium FRP composites, requiring reduced cathodic protection
- A packaged solution: Our concept design & product development is supported by an in-house team of experts (Engineering Services Department & Specialist Fabrications Department)

**Speak to one of our experts today:**

**Simon Eves, Technical Director**  
 Simon.Eves@nov.com | +44 (0) 7843 630881



PXV5SCS June 2017 V1. Hannah Wright © Pipex px®