

Principle Products & Services overview

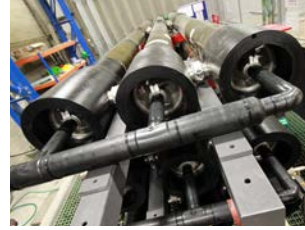
Pipex px[®] are committed to solving construction **weight**, **corrosion** & **access** issues with the advanced design & unique manufacturing of FRP composite & thermoplastic pipe systems, chambers, vessels & structures. Our innovative products are custom design & build, and are complimented by our expert in-house [Engineering Services Department](#) (ESD) to provide sustainable & optimised turn-key solutions.

Pipe systems



- [BONDSTRAND[®] GRE](#)
- [CHEMSAFE[®] chemical drainage](#)
- [BIOSAFE[®]](#)
- [CHEMSAFE[®] ORION[®]](#)
- [Thermoplastic](#)
- [Floor drains, gullies & channels](#)
- [Puddle flanges](#)

Pressure vessels



- [Thermoplastic pressure vessels](#)
- [Composite pressure vessels](#) (ASME X, BS 4994 & BS EN 13923)

Handrails, ladders & gates



- [MARRS[®] OFFSHORE handrails](#)
- [MARRS[®] INDUSTRIAL handrails](#)
- [SAFRAIL[®] handrails, ladders & gates](#)

Grating & flooring systems



- [DURAGRATE[®] moulded grating](#)
- [DURADEK[®] & DURAGRID[®] pultruded grating](#)
- [SAFPLANK[®] & SAFDECK[®]](#)

Bridge products



- [Footbridges](#)
- [Bridge decks](#)
- [Bridges & bridge structures](#)
- [Bridge enclosures](#)
- [Bridge parapets](#)
- [Bridge cable & access systems](#)

Structures, platforms & architectural products



- [FRP structures & walkways](#)
- [Stairs, hopovers & ramps](#)
- [FRP platforms](#)
- [Architectural products](#)
- [FRP phenolic structures](#)
- [Railway HUMPS[®], BUMPS, fast-build & platform level access](#)

Manholes, chambers & tanks



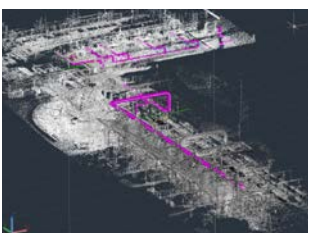
- [External manholes](#)
- [Underslab manholes](#)
- [Civil Engineered chambers](#)
- [Holding tanks](#)
- [Cable drawpits](#)
- [Packaged pumping stations](#)
- [Manhole & pump station liners](#)

Protection systems



- [HS armour & blast protection](#)
- [Shielding & cladding](#)
- [Subsea cocoon & shroud[®]](#)
- [Subsea cable protection](#)
- [Subsea impact protection](#)
- [Baffles, barriers & bunds](#)
- [Anti trespass & security barriers](#)
- [FRP buildings](#)
- [Structural liners](#)

Engineering & services



- [Project services](#)
- [Field service engineering](#)
- [Fabrication & installation](#)
- [3D laser surveys & dimensional control](#)
- [Building Information Modelling \(BIM\) LVL 1](#)
- [Piping stress analysis](#)
- [Finite element analysis](#)
- [Innovation, R&D](#)
- [Piping design, assistance & verification](#)
- [Structural engineering](#)

Sustainability systems

- [Carbon abatement systems](#)

Bespoke solutions

- [Bespoke customer requirements](#)
- [Custom pultruded shapes & profiles](#)

For more information, visit pipexp.com/products or contact us on: sales@pipexp.com or +44 (0) 1752 581200.